

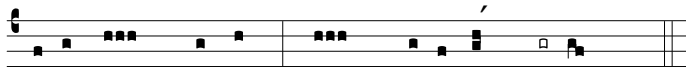
# The Sarum Tonale

## with the tones used for the psalter in the Manual of Plainsong

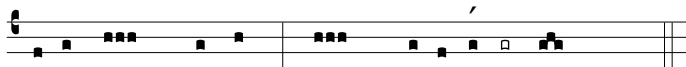
1902

	+1	+2	+3	+4	+5	+6	+7	+8	+9	+10
0	i1	v1	viii2	ii1	i4	ii1	i1	viii1	vi	iv4
10	vii2	iv4	iii4	iv6	iv4	i1	ii1	i2	iii5	vii5
20	vi	ii1	viii1	vii5	i1	vi	vi	iv4	viii1	viii1
30	iii5	vi	v1	vii2	i1	ii1	i4	i8	ii1	vi
40	iv1	iii4	iii4	i2	viii2	v1	vii4	viii1	iv8	iii2
50	iv4	vii7	iv6	vi	i8	i2	viii1	ii1	iii5	vi
60	iv4	iv7	viii3	ii1	viii1	i3	vii2	v1	iv4	ii1
70	iii2	viii2	i4	vii7	vi	vii5	ii1	i4	vii1	iv4
80	v1	viii2	iv5	i2	vii7	iv8	i5	ii1	i1	vi
90	viii1	i2	v3	iv5	iii4	viii2	v1	i5	iv4	viii1
100	i2	ii1	viii2	iii2	vii6	vi	i2	viii2	ii1	iii2
110	viii2	vii5	v2	tp	tp	ii1	vii5	vi	below	vii6
120	vii6	iv6	ii1	vii2	vii2	iv6	ii1	ii1	iv4	iv6
130	iv6	v1	i1	i1	vii5	iii6	ii1	iii2	i8	iii5
140	viii1	vi	vii1	i2	vii5	viii2	viii1	vii6	iii5	viii2

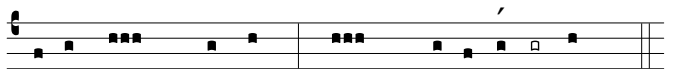
I 2



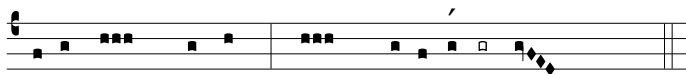
I 3



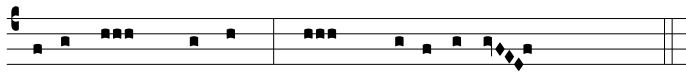
I 4



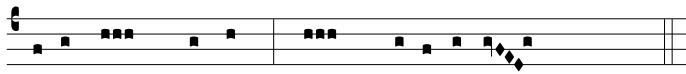
I 5



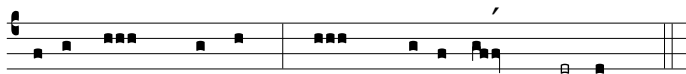
I 6



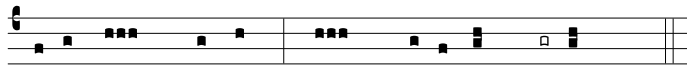
I 7



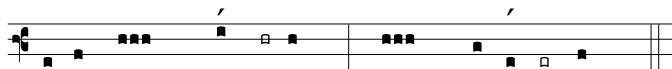
I 8



I 9



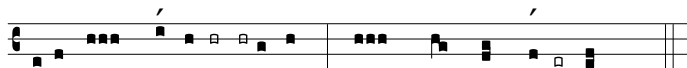
II 1



II 2



III 1



III 2



III 3



III 4









# VII 7

Musical notation for VII 7, consisting of two staves. The first staff has a treble clef and a key signature of one flat. The second staff has a bass clef. The notation includes various rhythmic values represented by black squares and stems, with accents over some notes.

# VIII 1

Musical notation for VIII 1, consisting of two staves. The first staff has a treble clef and a key signature of one flat. The second staff has a bass clef. The notation includes various rhythmic values represented by black squares and stems, with accents over some notes.

# VIII 2

Musical notation for VIII 2, consisting of two staves. The first staff has a treble clef and a key signature of one flat. The second staff has a bass clef. The notation includes various rhythmic values represented by black squares and stems, with accents over some notes.

# VIII 3

Musical notation for VIII 3, consisting of two staves. The first staff has a treble clef and a key signature of one flat. The second staff has a bass clef. The notation includes various rhythmic values represented by black squares and stems, with accents over some notes.

# VIII 4

Musical notation for VIII 4, consisting of two staves. The first staff has a treble clef and a key signature of one flat. The second staff has a bass clef. The notation includes various rhythmic values represented by black squares and stems, with accents over some notes.

# tp

Musical notation for tp (trumpet), consisting of two staves. The first staff has a treble clef and a key signature of one flat. The second staff has a bass clef. The notation includes various rhythmic values represented by black squares and stems, with accents over some notes.