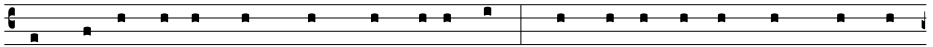


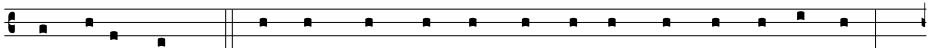
Psalm 141

Domine, clamavi

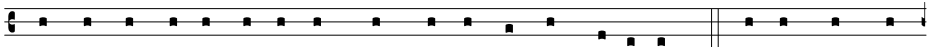
tone VIII1



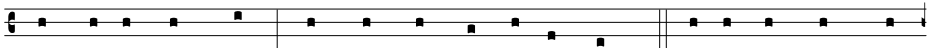
LORD, I call up-on thee, haste thee unto me: and consid-er my voice when I



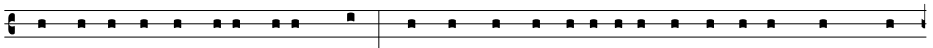
cry unto thee. 2. Let my prayer be set forth in thy sight as the incense:



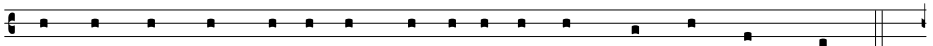
and let the lifting up of my hands be an evening sacrifice. 3. Set a watch, O



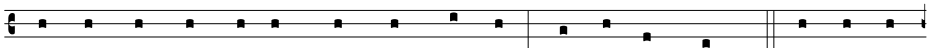
Lord, before my mouth: and keep the door of my lips. 4. O let not mine heart



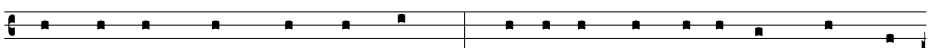
be inclined to any evil thing: let me not be occupied in ungodly works with



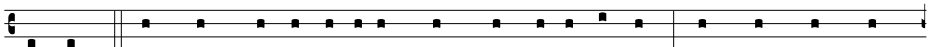
the men that work wickedness, \*lest I eat of such things as please them.



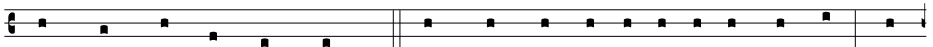
5. Let the righteous rather smite me friendly: and reprove me. 6. But let not



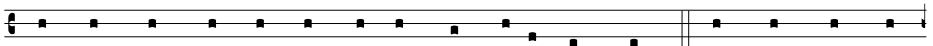
their precious balms break my head: yea, I will pray yet against their wick-



edness. 7. Let their judges be overthrown in stony places: that they may hear



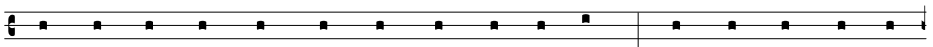
my words, for they are sweet. 8. Our bones lie scatter-ed before the pit: like



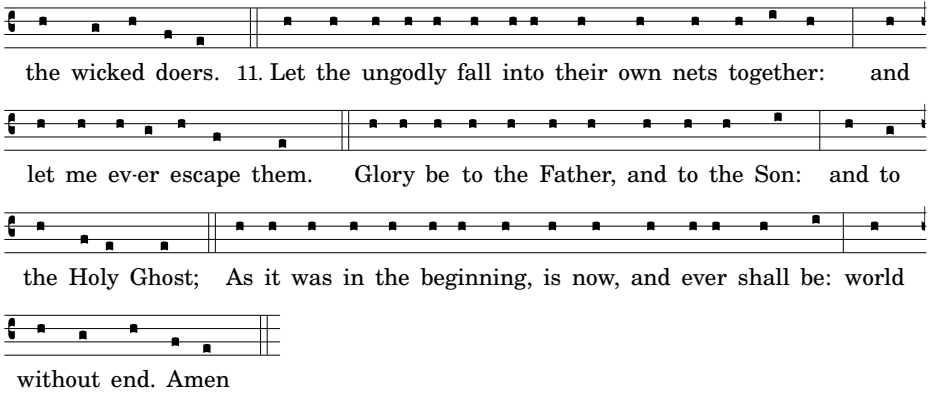
as when one breaketh and heweth wood upon the earth. 9. But mine eyes look



un-to thee, O Lord God: in thee is my trust, O cast not out my soul.



10. Keep me from the snare that they have laid for me: and from the traps of



the wicked doers. 11. Let the ungodly fall into their own nets together: and  
let me ev-er escape them. Glory be to the Father, and to the Son: and to  
the Holy Ghost; As it was in the beginning, is now, and ever shall be: world  
without end. Amen

The image shows four staves of musical notation. Each staff consists of a treble clef, a key signature of one flat (B-flat), and a common time signature (C). The notes are represented by black squares on a five-line staff. The lyrics are printed below each staff, with some words hyphenated across lines. The first staff ends with a double bar line. The second and third staves also end with double bar lines. The fourth staff ends with a double bar line and a repeat sign.